

EXAPTplus Parametric

The graphic-interactive NC programming technique is an appropriate method for the NC data generation, which can lead to high result reliability. But when producing key products with high rates of similar form and process conditions then extended possibilities for efficient NC planning are required to avoid unnecessary repetition effort. This is the focus of EXAPTplus Parametric to supply the user additional to the comfortable graphic-interactive EXAPTplus application.

The following advantages are offered to the user in particular:

- fast, profitable generation of NC programs by a high automation level
- demand-oriented formation of the automation grade

- flexible layout for specific needs of part spectrum, technology, machine, CNC control and organisation including the embedding in a straight-through CAD/CAM engineering chain
- ability to machining-oriented parameterisation of technological facts

Performance features

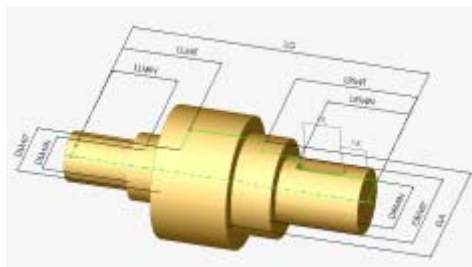
- fast, reliable access to repeatedly usable facts of geometric, technological, machine-specific or organisational kind
- most minimal effort for part family programming
- fast and concise programming of similar parts
- efficient use of machining objects
- flexible user interface for the parameter input

- aligned use by predefinition of machine-specific characteristics
- shopfloor-oriented formatting for CNC-cycle output

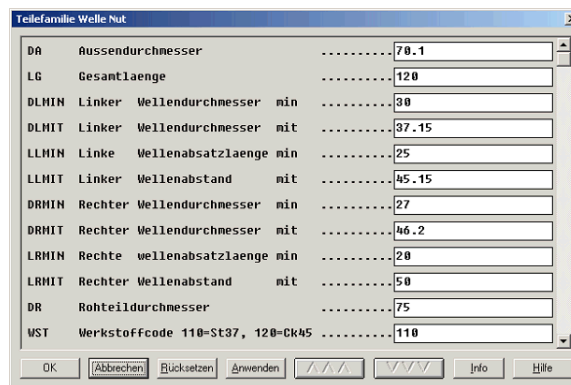
Global job-oriented system functions:

- jumps
- loops
- subroutines
- parameterisation of geometrical, technological and organisational facts
- access to current values of the EXAPTplus database generated during NC programming
- integration in the graphic-interactive user surface (selection box, pictograms, sketches, menu configuration)

EXAPT Parametric for part families



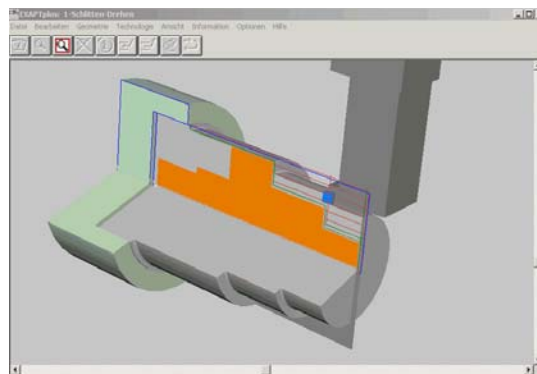
Part family shaft with groove
Parameterised display



Input mask for dimensioning of a variant



Dimensioned variant

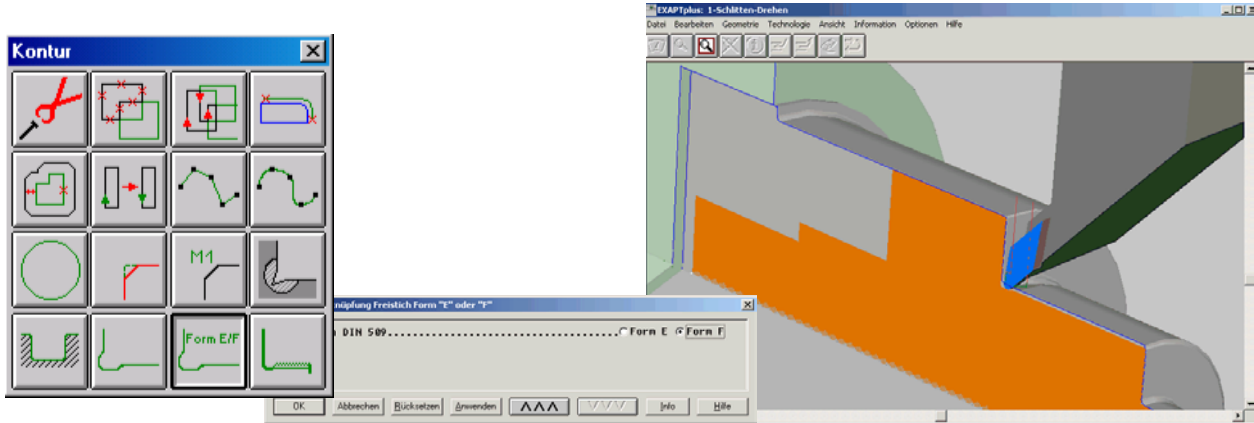


Automatically generated NC control data
Cut-out from the simulated machining sequence of the variant

EXAPTplus Parametric

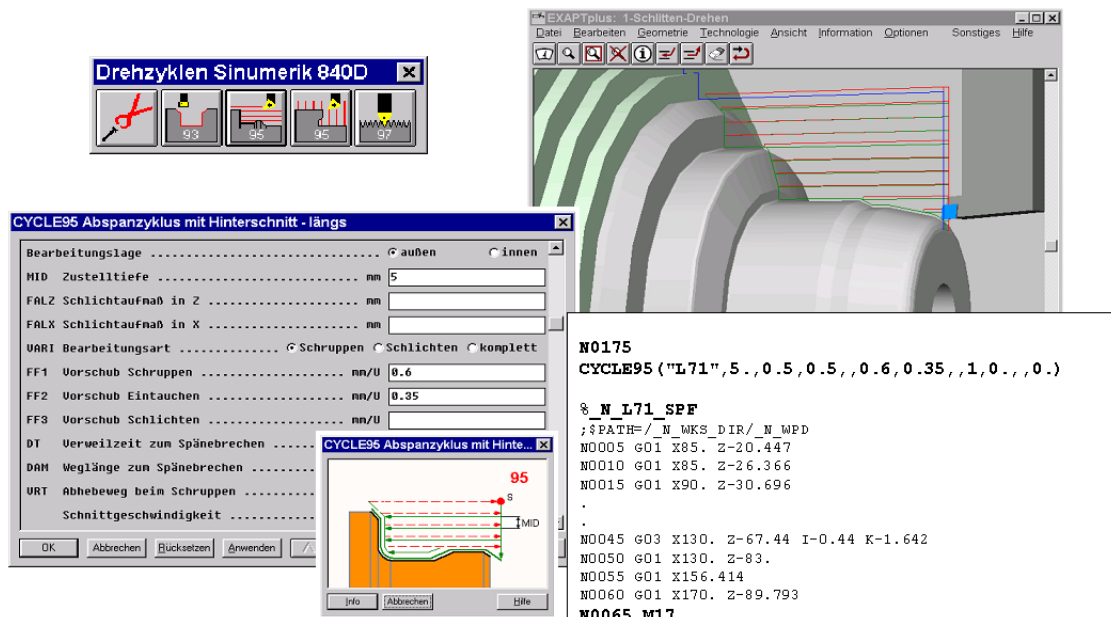
(Art.-no. 11040)

EXAPT Parametric for the machining object recess



After pointing to the recess function and selection of the recess form the geometry of the part will be enlarged at the selected edge automatically by the machining object recess and the machining sequence will be created

EXAPT Parametric for CNC cycles



CNC cycle plain turning with EXAPTplus
Example for Sinumerik 840D

Installation requirements

EXAPT systems are based on Windows for the use on single PCs or servers in the network compound. Required hardware configurations depend on the software constellation and the user-related quantity of data. More details follow in the current EXAPT-recommendation for hardware configuration.