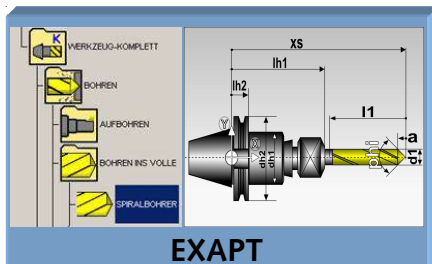


Software »pilot 3.0« EXAPT/ZOLLER Interface

8774051

Interface between an EXAPT CAD/CAM system and a ZOLLER presetting and measuring machine with software »pilot 3.0« for central tool data management and process cycle enhancement.



1. Sends presetting request and nominal data

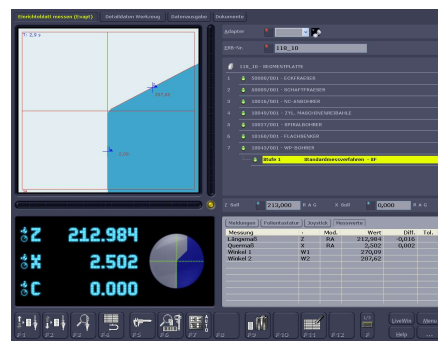
{online Gruppeneinschränkung} - Datensatz: 1 (5)

Einzelbestand	Bezeichnung	Material	NC-Prog-Nr.
118_10	SEGMENTPLATE	DECKEL DC 35	DC_000015_1
153_10	SD-TEIL	DECKEL DC 35	DC_000015_1
144_10	WENDEPLATE	DECKEL DC 35	DC_000015_1
155_10	V8 GRUNDRAHMEN	DECKEL DC 35	DC_000015_1
166_10	ZYLINDERKOPF	DECKEL DC 35	DC_000015_1

2. User selects a presetting request for processing



ZOLLER Presetting and measuring machine with software »pilot 3.0«



3. Transfer of actual data



Procedure:

The entire tool data are defined and stored in the EXAPT database. Presetting requests are submitted to the ZOLLER presetting and measuring machine by WEB service. Select a request from the list with open requests within ZOLLER software »pilot 3.0« and start the process. Complete any missing parameters necessary for presetting as displayed. At the end of the entire procedure, all actual data together with the measuring parameters which may have been added during the process are then retransferred to the EXAPT database and at your disposal the next time.

Your benefits:

- Uncompromised process cycle
- Fast access to tool data
- Centralized data storage
- Easy integration in the EXAPT workflow
- Just-in-Time provision of presetting requests
- Access by WEB service, no need for postprocessor-specific adaptation
- Flexible customization to specifications
- Simple requests for stock location
- Gross and net requirements planning of tools
- Utmost transparency by displaying the tool as graphics
- Scalable extensions
 - Tool component management
 - Gross/net requirements management
 - Stock/inventory management
 - and many more

Requirements:

- **EXAPT:** EXAPTpdo (basic version 5.03 or higher)
- **ZOLLER:** Presetting and measuring machine with image processing technology »pilot 3.0« version 1.8 and higher
- Integration of the presetting and measuring machine in the network and access to the EXAPT data base server